

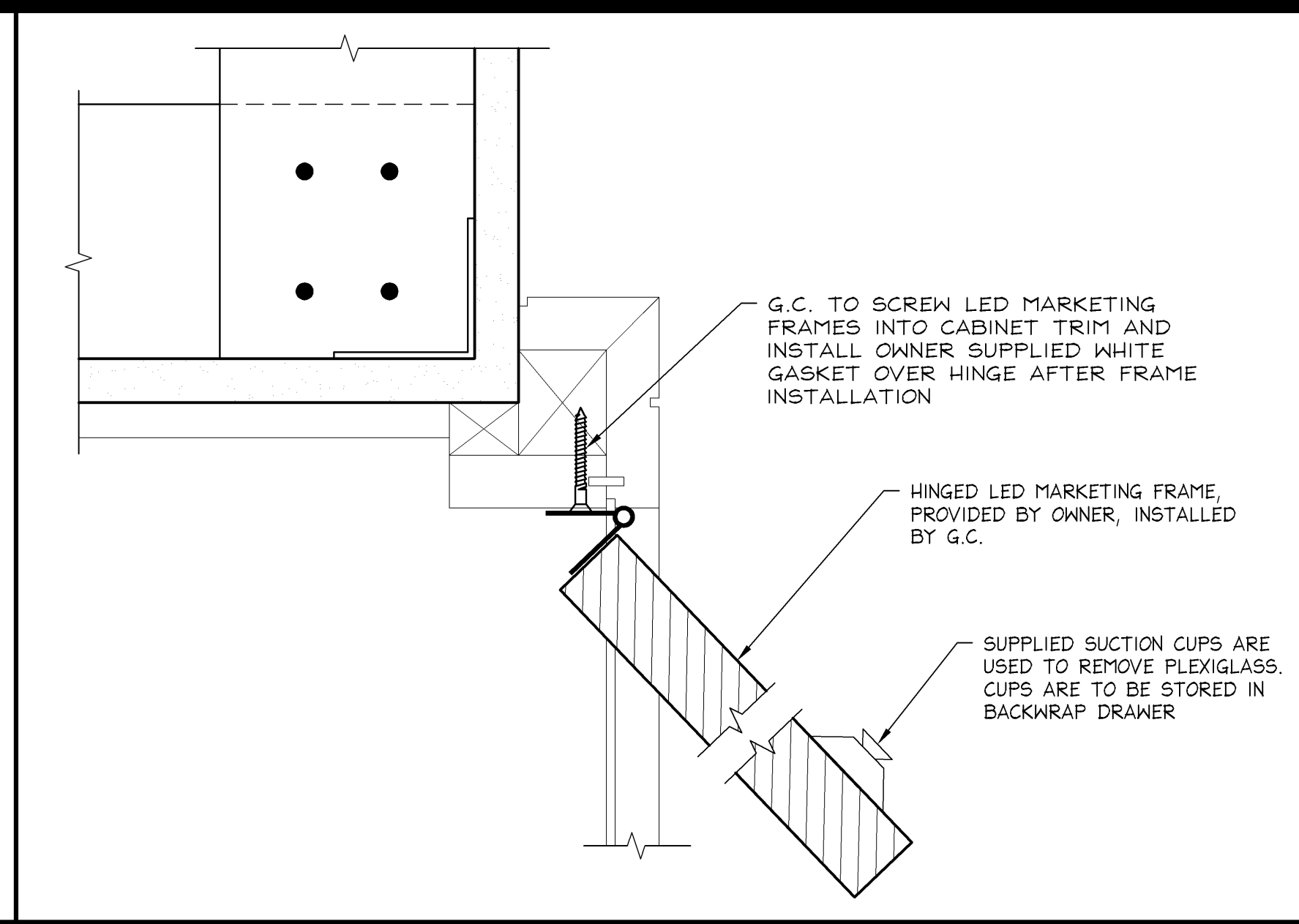
CABINET TRIM DETAILS

6" ± 1'-0"

42D-A101-800-DETL

S

01.27.12



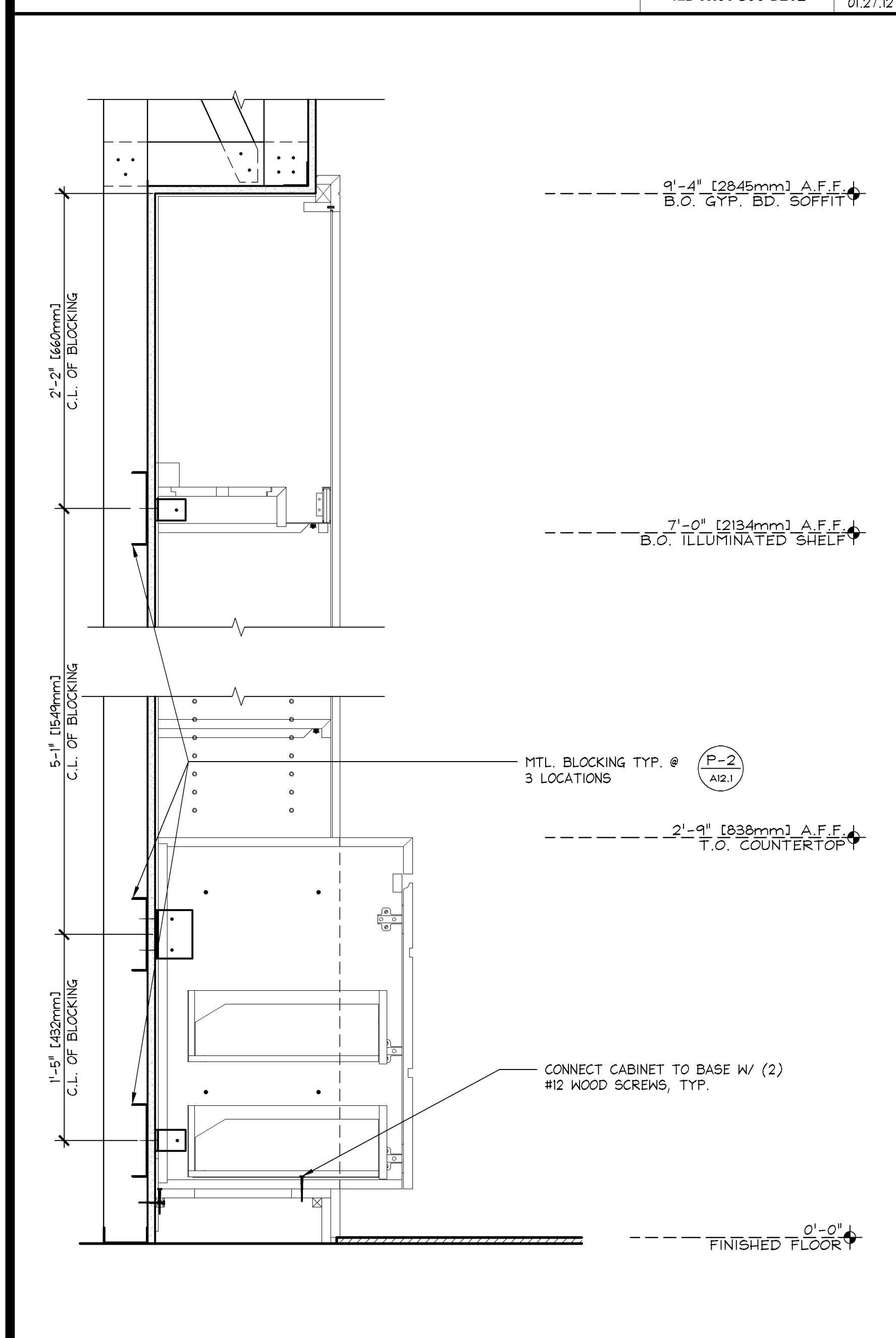
HINGED MARKETING FRAME INSTALLATION DETAILS

6" ± 1'-0"

42D-A101-M00-DETL

M

10.14.11



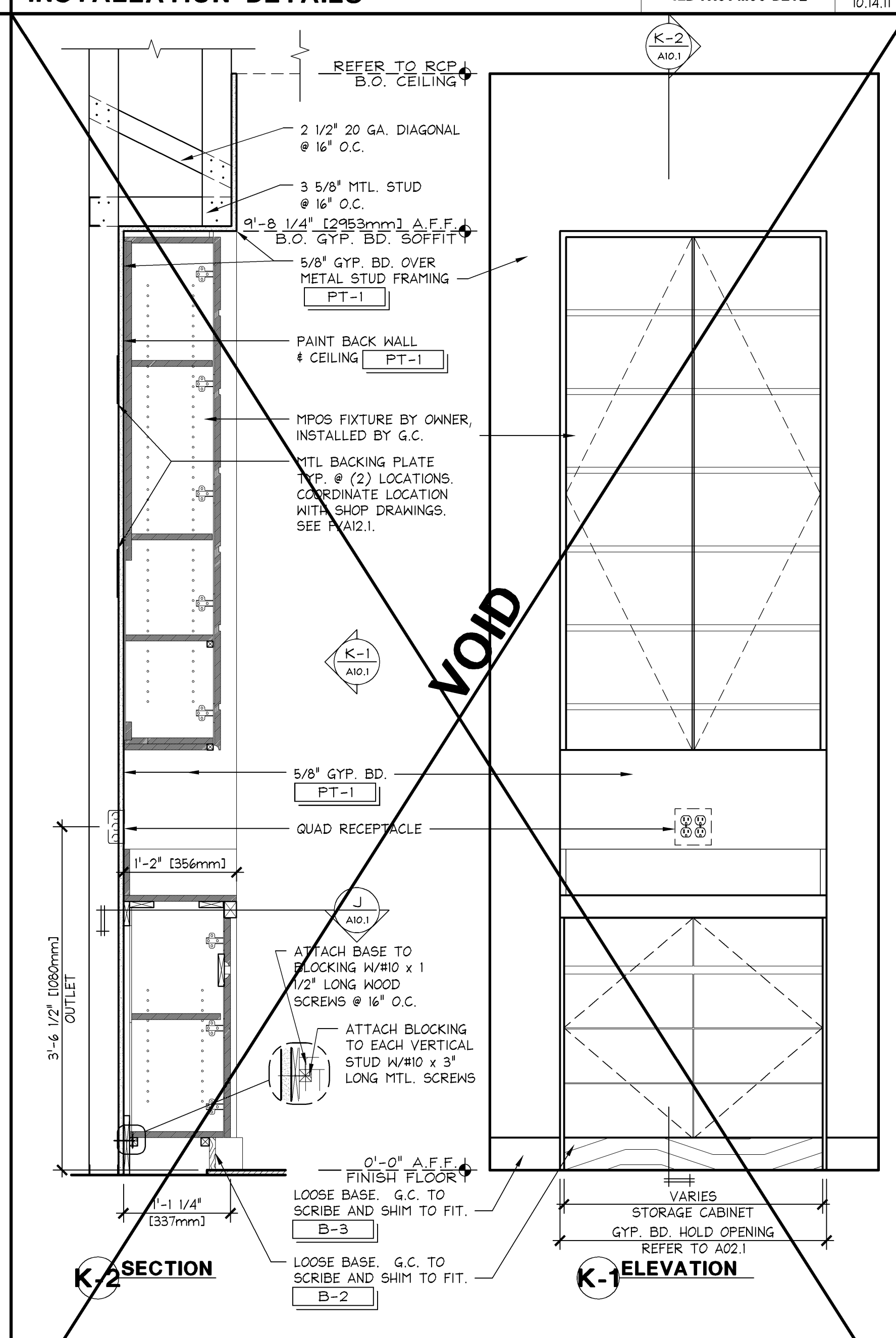
"UNIT 1" SEISMIC ADDITIONS (HIGH SEISMIC DESIGN CAT D, E & F)

1 1/2" ± 1'-0"

42S-A101-P00-SECT

P

01.27.12



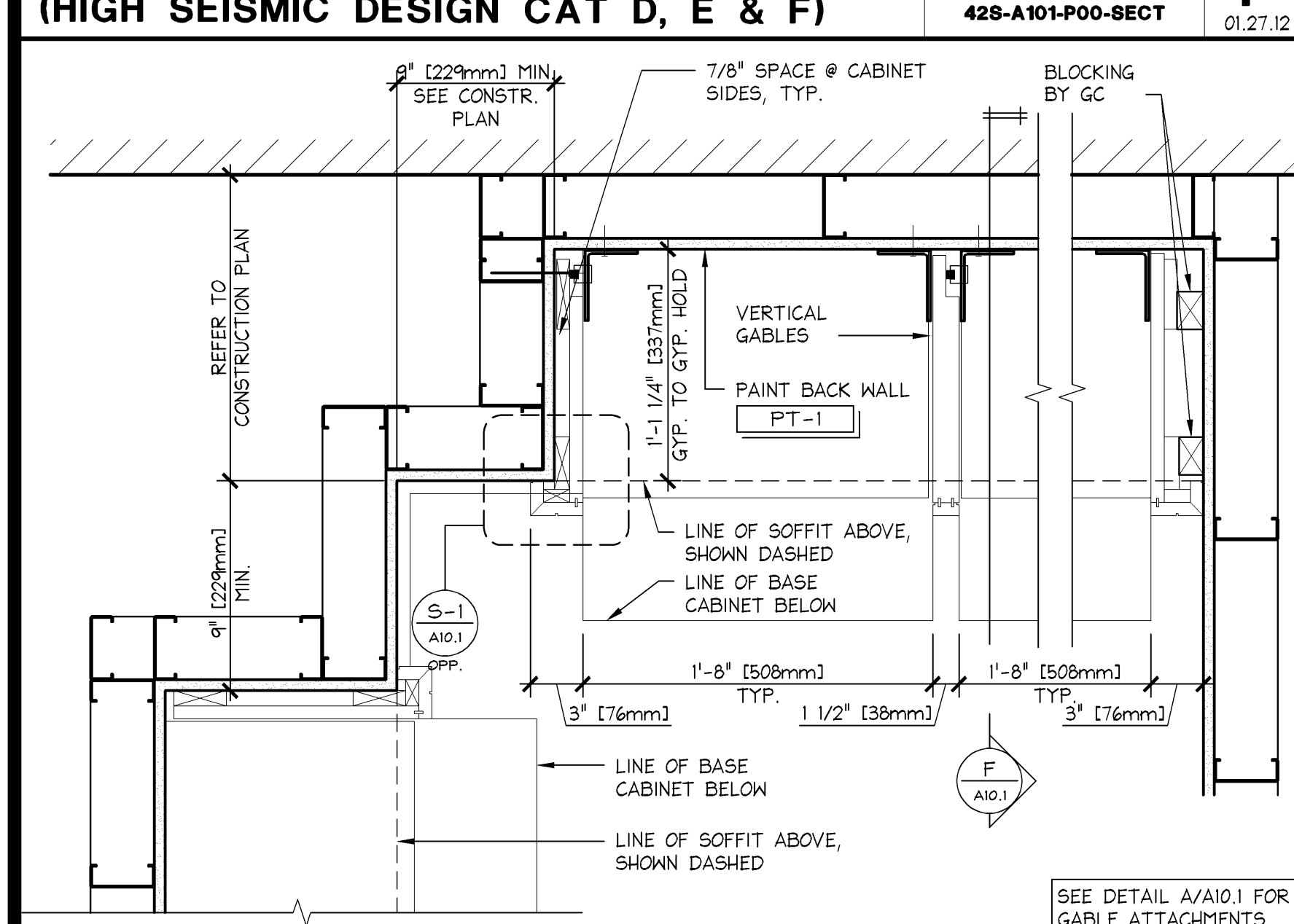
STORAGE CABINET DETAILS (FF-44)

1" ± 1'-0"

42D-A101-K00-DETL

K

01.27.20



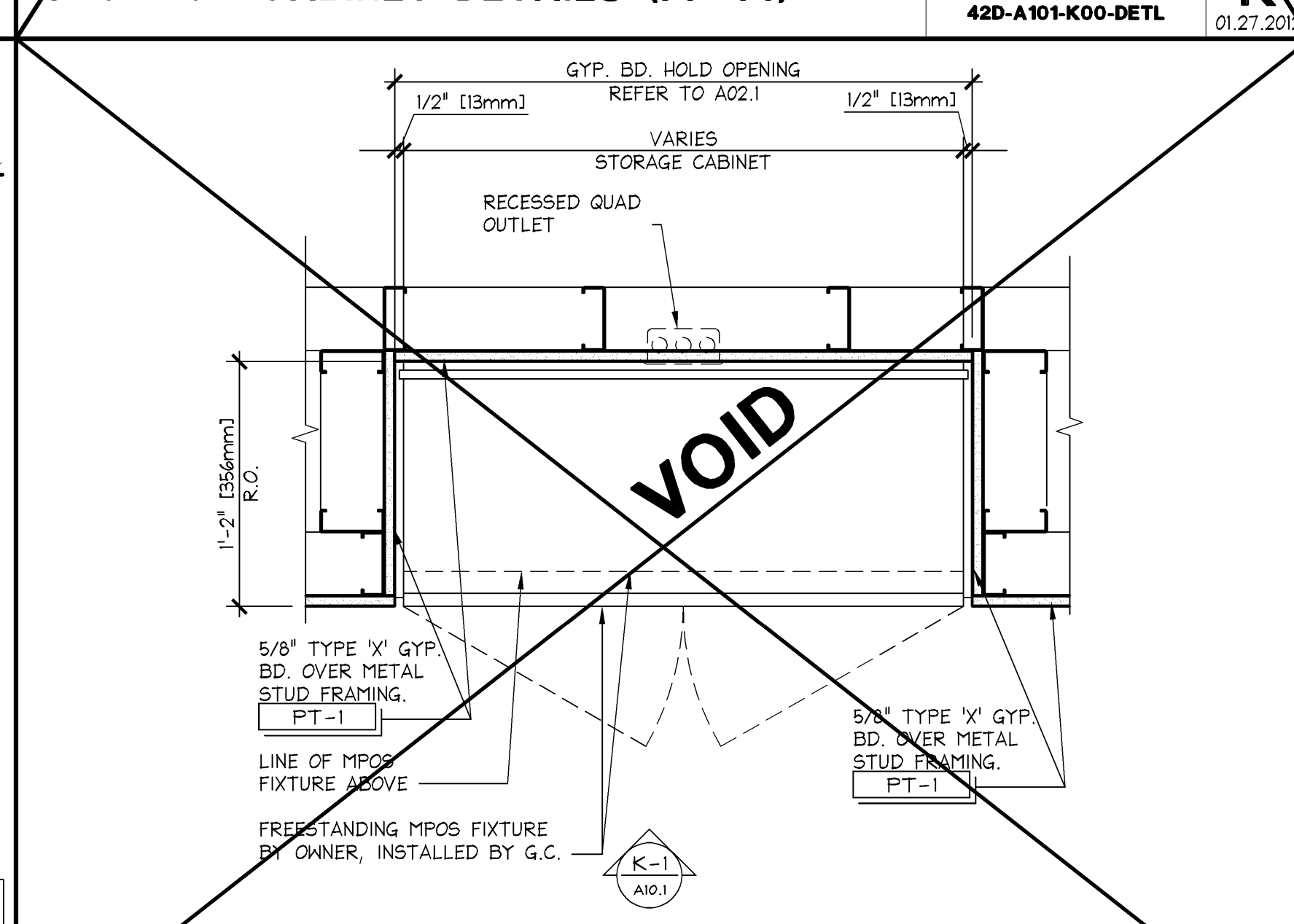
END CONDITIONS @ "UNIT 1"

1 1/2" ± 1'-0"

42D-A101-N00-DETL

N

01.27.12



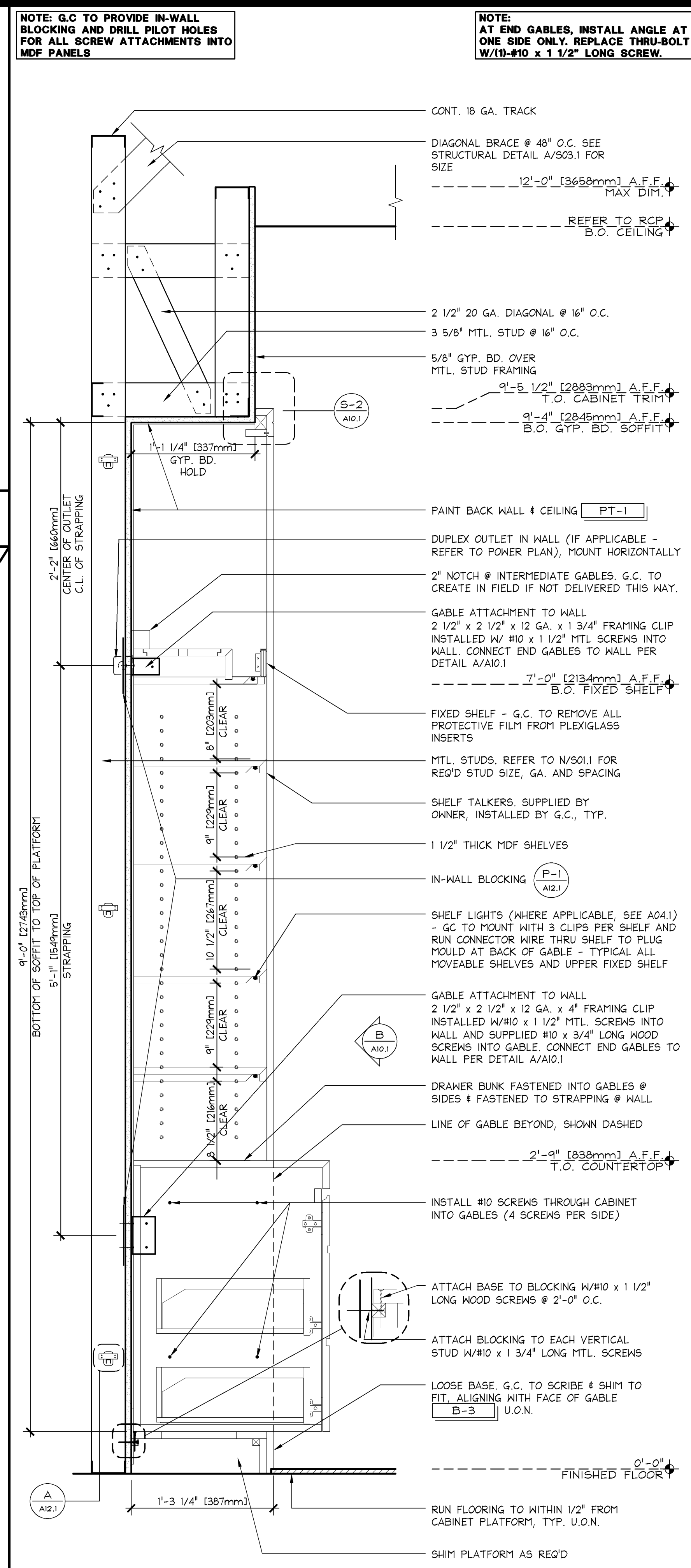
STORAGE CABINET PLAN (FF-44)

1 1/2" ± 1'-0"

42D-A101-J00-DETL

J

01.27.20



SECTION @ "UNIT 1"

1 1/2" ± 1'-0"

42S-A101-F00-SECT

F

06.08.2012

- UNIT 1 CABINET INSTALLATION GUIDELINES**
- THE SOFFIT HEIGHT SHOULD BE SET FROM THE HIGHEST POINT OF THE SLAB AND MAINTAINED LEVEL THROUGHOUT THE STORE UNLESS NOTED OTHERWISE.
 - FINISHED CABINET BAY DEPTH TO BE 1'-1 1/4" FOR UNIT 1 CABINETS, 1'-5 3/4" FOR UNIT 1H CABINETS
 - OUTSIDE CORNERS OF GYPSUM BOARD CABINET BAY THAT RECEIVE PERIMETER TRIM DO NOT RECEIVE CORNER BEAD.
 - INSTALL AND SHIM PLATFORMS SO THE TOP OF THE PLATFORM IS 8'-11 3/4" FROM THE UNDERSIDE OF THE SOFFIT. BACK OF PLATFORM TO BE 1/4" AWAY FROM THE FACE OF THE GYPSUM BOARD RECESS.
 - SET VERTICAL GABLES BY SCREWING STEEL ANGLES INTO IN WALL BLOCKING. LEAVE GABLES LOOSE. THERE SHOULD BE A 1/4" GAP BETWEEN THE TOP OF THE GABLE AND THE UNDERSIDE OF THE SOFFIT.
 - INSTALL PERIMETER CABINET TRIM. SLIDE GABLE SO THAT THE FRONT FACE OF THE GABLE ALIGNS WITH THE FACE OF THE TRIM. THIS WILL LEAVE A SMALL GAP BETWEEN THE BACK OF THE GABLE AND THE FACE OF THE GYPSUM BOARD WALL.
 - SCREW STEEL ANGLES TO THE GABLES. SCREWS IN LOWER BRACKET AT GABLE MUST SEAT FLUSH IN COUNTERSINK TO ALLOW SUFFICIENT SPACE TO INSTALL BASE CABINETS.
 - DRILL PILOT HOLE AT 45 DEGREES THROUGH TOP OF CABINET TRIM, BLOCKING AND TOP OF EACH GABLE TO ACCEPT A 3" #10 SCREW.
 - SCRIBE BASE TIGHT TO FLOOR AND INSTALL WITH FACE OF BASE ALIGNED FLUSH WITH FACE OF GABLES.
 - INSTALL BASE CABINETS PER DRAWINGS. THE BASE CABINET SIDES SHALL HAVE EQUAL GAPS BETWEEN THE GABLES AND THE BACK SHALL FIT TIGHT TO THE STEEL ANGLES, LEAVING A SMALL GAP BETWEEN THE CABINET AND THE WALL. USE CAUTION WHEN SCREWING THROUGH CABINET SIDES INTO GABLES TO ENSURE THAT CABINET SIDES DO NOT BOW OUTWARD.
- NOTES: DRYWALL SCREWS ARE NOT ACCEPTABLE FOR ANY STEPS IN CABINET INSTALLATION. DO NOT CAULK THE QUIRK BETWEEN THE WALL AND THE PERIMETER TRIM, UNLESS DIRECTED BY THE OWNER.

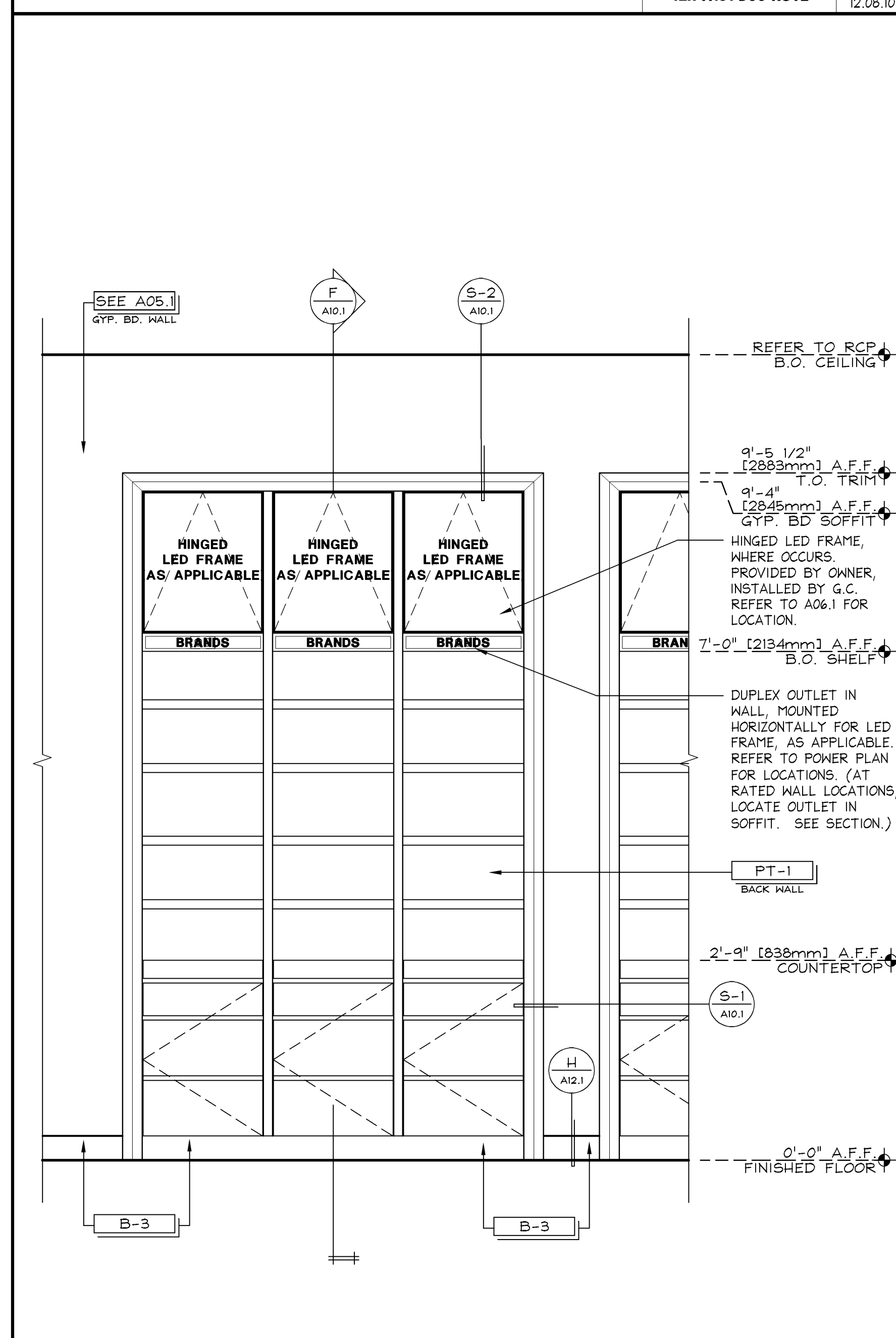
UNIT 1 INSTALLATION GUIDELINES

1/4" ± 1'-0"

42N-A101-D00-NOTE

D

12.08.10



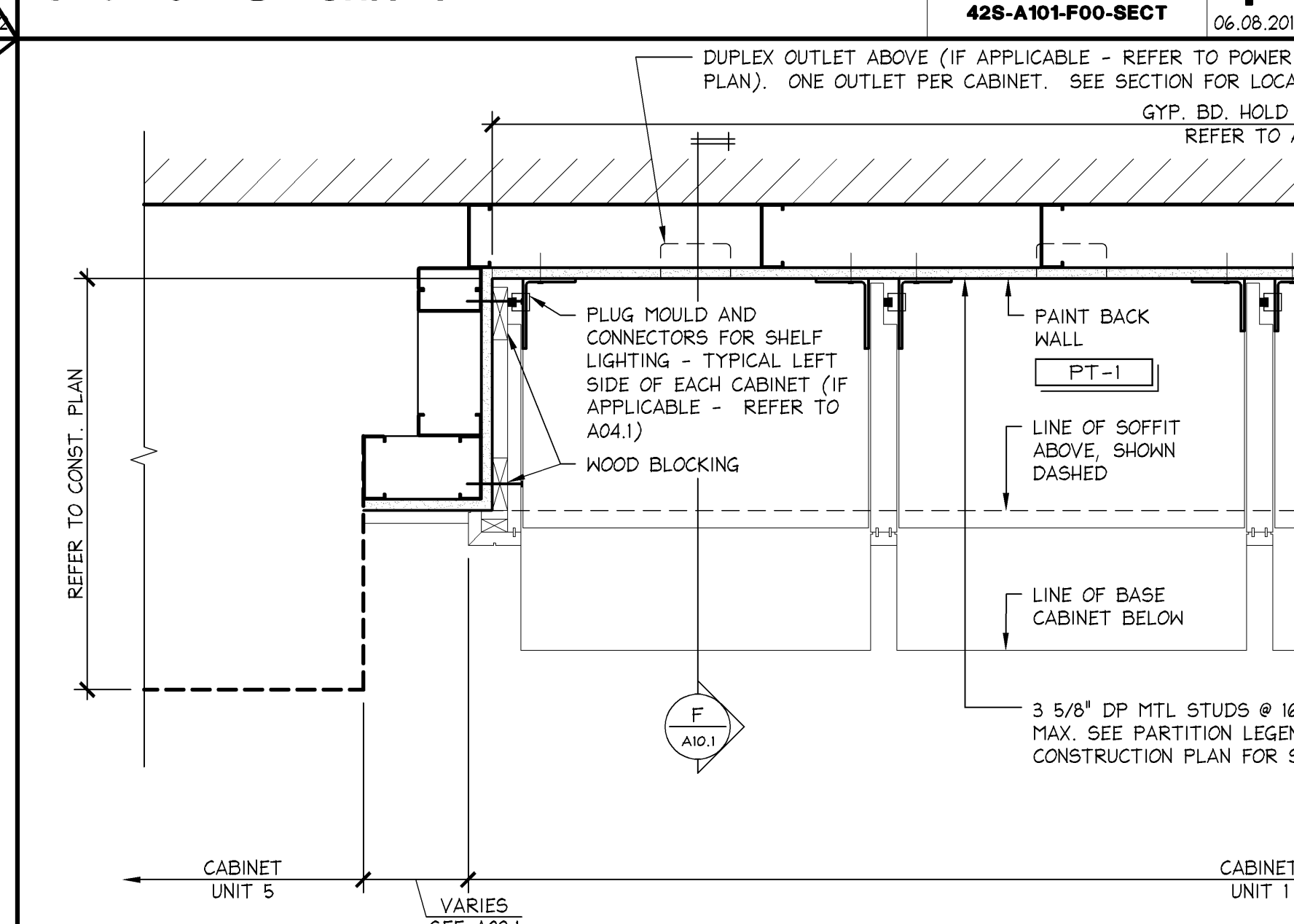
ELEVATION @ "UNIT 1"

3/4" ± 1'-0"

42E-A101-B00-ELEV

B

06.08.2012



ENLARGED PLAN @ "UNIT 1"

1 1/2" ± 1'-0"

42D-A101-A00-DETL

A

06.08.2012

SHREMSHOCK

Shremshock Architects, Inc.

6130 S. Sunbury Rd., Westerville, OH 43081

T: 614 545 4550 | F: 614 545 4555 | shremshock.com

Geoff S. Shremshock, Architect

Timothy J. Shremshock, Architect

limitedbrands

LIMITED STORE PLANNING, INC.

d/b/a STORE DESIGN & CONSTRUCTION

Three Limited Parkway • Columbus, Ohio 43230

Telephone: 614.415.7000 • Fax: 614.415.7349

24200161

BATH & BODY WORKS

THE GALLERIA II

SPACE WEST, 15000 RD.

HOUSTON, TX 77056

SCOPE: REMODEL

DESIGN TYPE: EASTON-G

PACKAGE: 14150

GENERATION: 130940

PROJECT #:

PERIMETER CABINETRY DETAILS

DRAWING NUMBER: **A10.1**

DATE ISSUED: 3/7/14

DESIGNED BY: SB

DRAWN BY: JLH

CHECKED BY: RHW

REVISIONS:

REQUIRED BY: DATE:

ELITE CONSTRUCTION GROUP

LAKE JACKSON, TX

PHONE: 979-283-5010

NOTE: THESE PRINTS HAVE BEEN REPRODUCED BY 50 PERCENT SCALE WILL BE 50 PERCENT OF WHAT IS NOTED ON PLANS